

**1. Functional Shoulder Joint**

Consists of shoulder blade, collar bone, portion of humerus and joint ligaments. On stand.  
DIMENSIONS | 6x | 2x20 cm

A80

**2. Functional Knee Joint**

Consists of portion of femur, tibia and portion of fibula, also includes meniscus, patella with quadriceps tendon and joint ligaments. On stand  
DIMENSIONS | 2x | 1 2x34 cm  
A82

**3. Functional Hip Joint**

Consists of portion of femur, hip bone and joint ligaments. On stand.  
DIMENSIONS | 7x | 1 2x3 3 cm

A81

**4. Functional Elbow Joint**

Consists of portion of humerus, complete ulna and radius as well as joint ligaments. On stand  
DIMENSIONS | 2x | 1209 cm

A83

**3B Scientific' Mini Joint Series cross**

Following in the footsteps of their successful larger brothers above, these mini-joints have been reduced to a half of their natural size but have kept all of their functionality. In addition to the external anatomical structures, using the superb new joint cross-sections mounted on the base, the medical or teaching professional now has the possibility to explain what is happening from "within". Of course the joints are also available without base and cross-section.

**5. Mini Hip Joint with cross-section, on base**

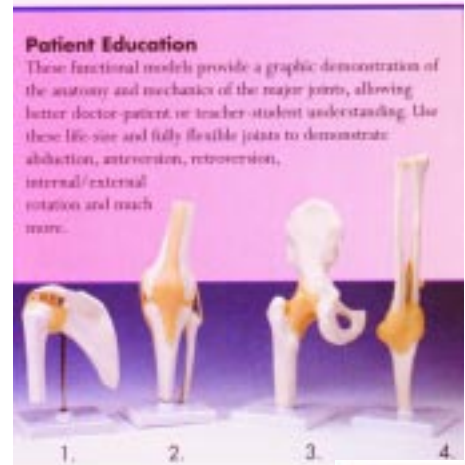
DIMENSIONS | 6x | 1 2x20 cm  
A84/1

**6. Mini Elbow Joint with cross-section, on base**

DIMENSIONS | 6x | 1 2x20 cm  
A87/1

**7. Mini Knee Joint with cross-section, on base**

DIMENSIONS | 6x | 1 2x20 cm  
A85/1



**8. Mini Shoulder Joint with section, on base**

DIMENSIONS | 6x | 1 2x20 cm  
A86/1

**9. Mini Hip Joint without base**

A84

**10. Mini Elbow Joint without base**

A87

**11. Mini Knee Joint without base**

A85

**12. Mini Should Joint without base**

A86



For pricing call:  
Kappa Medical, Inc. 520-778-0840 (fax) 520-776-9250

## 1. Deluxe Foot and Ankle

Cast from natural bone specimen  
Bones of foot and ankle  
Lower half of tibia and fibula  
Depicts all major muscles, nerves, arteries and tendons

Stand included

**W47008**

## 2. Deluxe Hand and Wrist )

Cast from natural bone specimen  
Articulated bones of hand and wrist interosseous muscles depicted  
Shows median, ulnar and radial nerve  
Tendons, ligaments and arteries simulated  
Palmar and thenar space simulated  
Transverse ligament can be cut to show carpal tunnel syndrome

Stand included

**W47005**

## 3. Deluxe Knee

Cast from natural bone specimen  
Distal half of femur articulated to tibia and fibula  
Patella )  
Depicts all major muscles of the knee  
Cruciate/ collateral ligaments simulated with triple springs  
Simulated "bucket Handle" tear in medial meniscus  
Patellar tendon simulated

Stand included

English description

**W47007**

## 4. Deluxe Shoulder

Cast from natural bone specimen  
Includes upper half of humerus, clavicle and scapula  
Shows 14 major muscles of the shoulder  
Articulated to show normal movement

Stand included

English description

**W47003**

## 5. Sports Shoulder

Cast from natural bone specimen  
Includes upper half of humerus, clavicle and Scapula  
Articulated to show normal movement  
Depicts the following: supraspinatus, long tendon, Glenoid labrum, rotator cuff

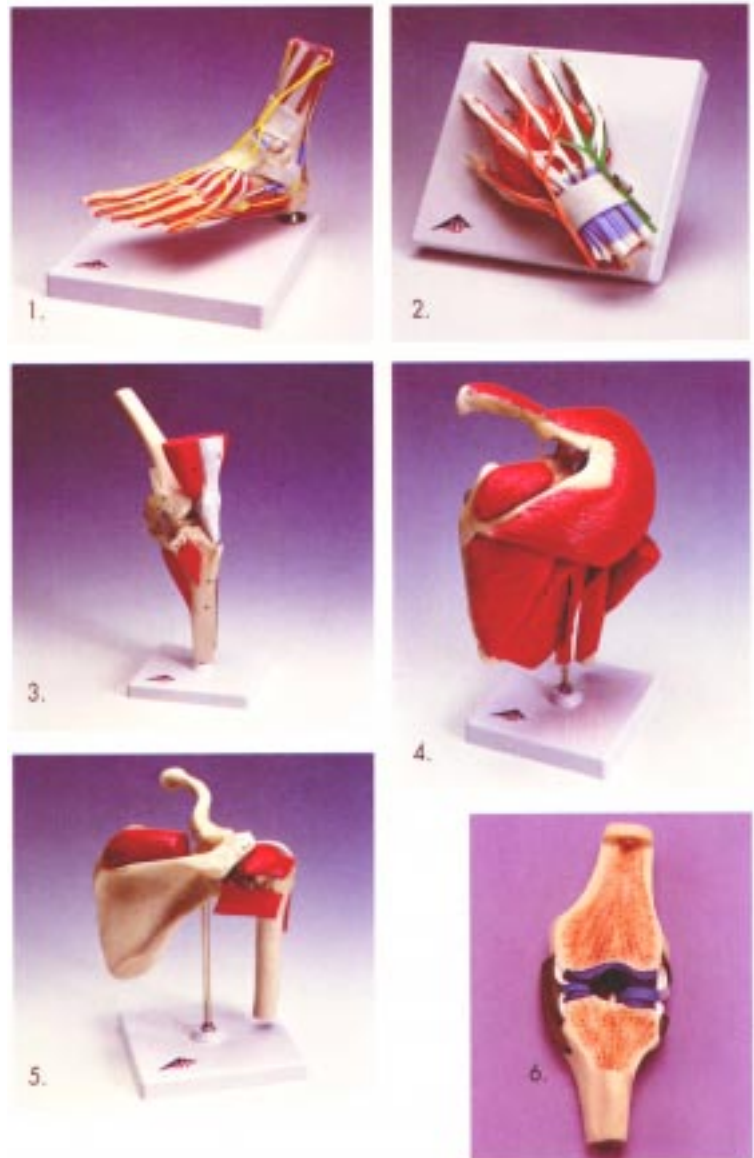
Stand included  
**W47002**

## 6. Sectional Knee Joint

Longitudinal section of the human knee joint. Bone Structure, meniscus, joint cartilage, synovial Membrane, and joint ligaments are shown in color

**W19006**

For pricing call:  
Kappa Medical, Inc.  
Box 11808  
Prescott, AZ 86304  
520-778-0840  
520-776-9250 fax



**1. Pelvic Skeleton, male**

Consisting of hip bones, sacrum with coccyx and 2 lumbar vertebrae.  
DIMENSIONS/WEIGHT 1 8x28x23 CM/0.8 KG  
**A60**

**2. Pelvic Skeleton, female, with movable femur heads**

All other features like A6 1.  
DIMENSIONS/WEIGHT 30x30x20 cm/ 1. 2 KG  
**A62**

**3. Pelvic Skeleton, female**

Consisting of hip bones, sacrum with coccyx and 2 lumbar vertebrae as well as movable symphysis.  
DIMENSIONS/WEIGHT 19x25x24 CM/0.9 KG  
**A61**

**4. Ligamented Pelvis, female**

This unique one-piece teaching preparation is fitted with life-like synthetic pelvic ligaments which in life hold the bones of the pelvic girdle together.  
DIMENSIONS/WEIGHT 28x21x21.5 cm/1.2 KG  
**W19012**

**3B Scientific Anatomical Charts**

DIMENSIONS 50x67 cm

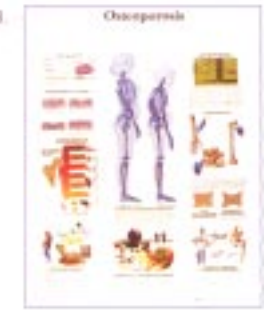
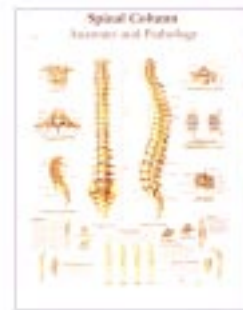
featured here

- 5. "Knee Joint"                   VRI 174
- 6. "The Foot"                    VR1 175
- 7. "Spinal Column"            VR1 152
- 8. "Osteoporosis"              VRI 121

5.



7.



For pricing call:  
Kappa Medical, Inc.  
PO Box 11808  
Prescott, AZ 86304  
520-778-0840  
520-776-9250 fax