

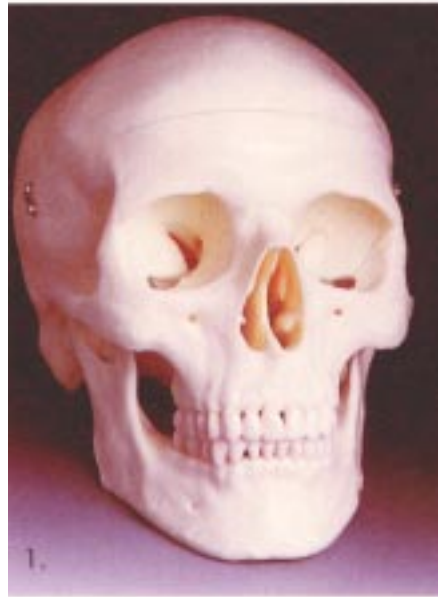
You have the choice between 25 different models – all with the following features:

Top Quality cast of natural specimens  
Hand-made form durable, unbreakable plastic  
Highly accurate depiction of features  
Can be disassembled

### 1. Classic Skull

Our Classic Skull combines quality and value. This popular skull comes in 6 versions, each designed with exceptional detail and offered at an affordable price. Our standard 3-part version is an excellent choice for basic anatomy or as a unique medically oriented gift. Alternatively, choose an upgraded version which depicts additional anatomical structures such as muscle origins /insertions, hand numbered bones and structures or the interaction between the skull and the bones of the neck joint or a complete 4part brain.

DIMENSIONS/WEIGHT **23x | 6.5x 17** CM/0.8 KG  
**A20**



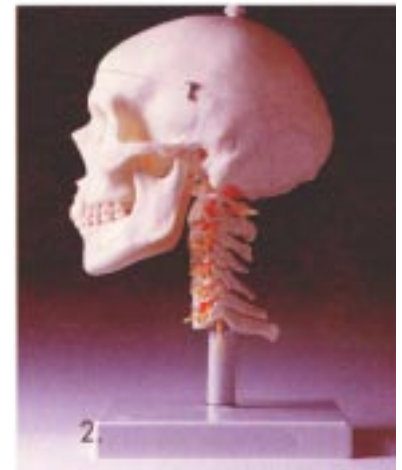
### 3. Numbered Classic Skull

Hand-numbered version identifying all relevant anatomical structures. Skull structures are drawn in color. An excellent skull for students. Comes with multilingual keycard. KEY CARD L/G/E/F DIMENSIONS/WEIGHT **23x | 6.5x 17** CM/0.9 **A21**

### 5. Transparent Classic Skull

Use this unique skull model to view internal bones and structures otherwise visible only through X-ray image.

DIMENSIONS/WEIGHT **2 3x | 6.5x 17** CM/0.8 KG  
**A20/T**



### 2. Classic Cervical Skull, 4-part

This flexibly mounted version sits atop the cervical spine and is mounted on a stand. Also depicted are the hindbrain, spinal cord, cervical nerves, vertebral arteries, basilar artery and rear cerebral artery, On stand. DIMENSIONS/WEIGHT

**36x23x20 cm/1.4** KG  
**A20/1**

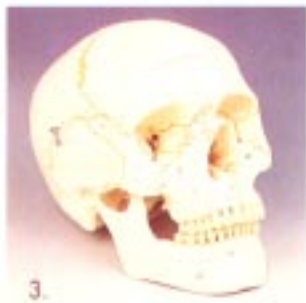
### 4. Classic Skull with Muscles

Muscle attachments (blue), and origins (red) are shown in color on the left side of the head. Skull bones and structures are numbered on the right side. This skull identifies over 140 anatomical features in all. KEY CARD L/G/E/F DIMENSIONS/WEIGHT **2 3x | 6.5x 17** CM/0.9 KG  
**A23**

### 6. Neon Skull

This skull is an illuminating example of the human anatomy. Like you have come to expect from 3B Scientific', all anatomical details are not only true but stand out in the dark. A great gift for Halloween and for those students or friends needing a flash of inspiration. What more can you wish for! DIMENSIONS/WEIGHT **2 3x | 6.5x 17** CM/0.9 KG

**A20/N**



For pricing call Kappa Medical, Inc. 1-800-634-0880 fax 520-776-250  
kappamed@northlink.com e-mail

**1. Deluxe Demonstration Skull, 10part**

In this first class replica of a human skull, the remainder under the removable calvariurn (with sinus, arteries and cranial nerves depicted in colors) is medically divided into two halves. Lamina perpendicular and vomer can be folded to the side to show the lateral nose wall and sinus sphenoidalis. The sinus frontalis as well as right halves of maxilla and mandible are fitted with flaps. The left temporal bone is removable and can be folded in the region of the tympanic membrane. The right temporal bone is opened to show the sinus sigmoideus, canalis nervi facialis and semicircular ducts. Maxilla and mandible expose alveolar vessels and nerves. Natural occlusion and individual removal and replacement of each tooth fulfill even the requirements of dentists.

DIMENSIONS/WEIGHT **28x22.5x 18.5** CM/ 1. 1 KG  
A27

**2. Deluxe Demonstration Skull, with acrylic cover** DIMENSIONS/WEIGHT 48x39x36 cm/4.8 KG **A27/9**

**3. Deluxe 3-Part Skull**

This skull is so realistic, you might mistake it for the real thing! Our upgraded version includes additional detailing for a more realistic appearance, particularly inside the cranial vault. This model contains 32 teeth and is sectioned into three parts: mandible, skull cap and cranial vault.

DIMENSIONS/WEIGHT 23x 16.5x 7 CM/0.9 KG  
A28

**4. Skull with Brain, 7-part**

Skull can be disassembled into:

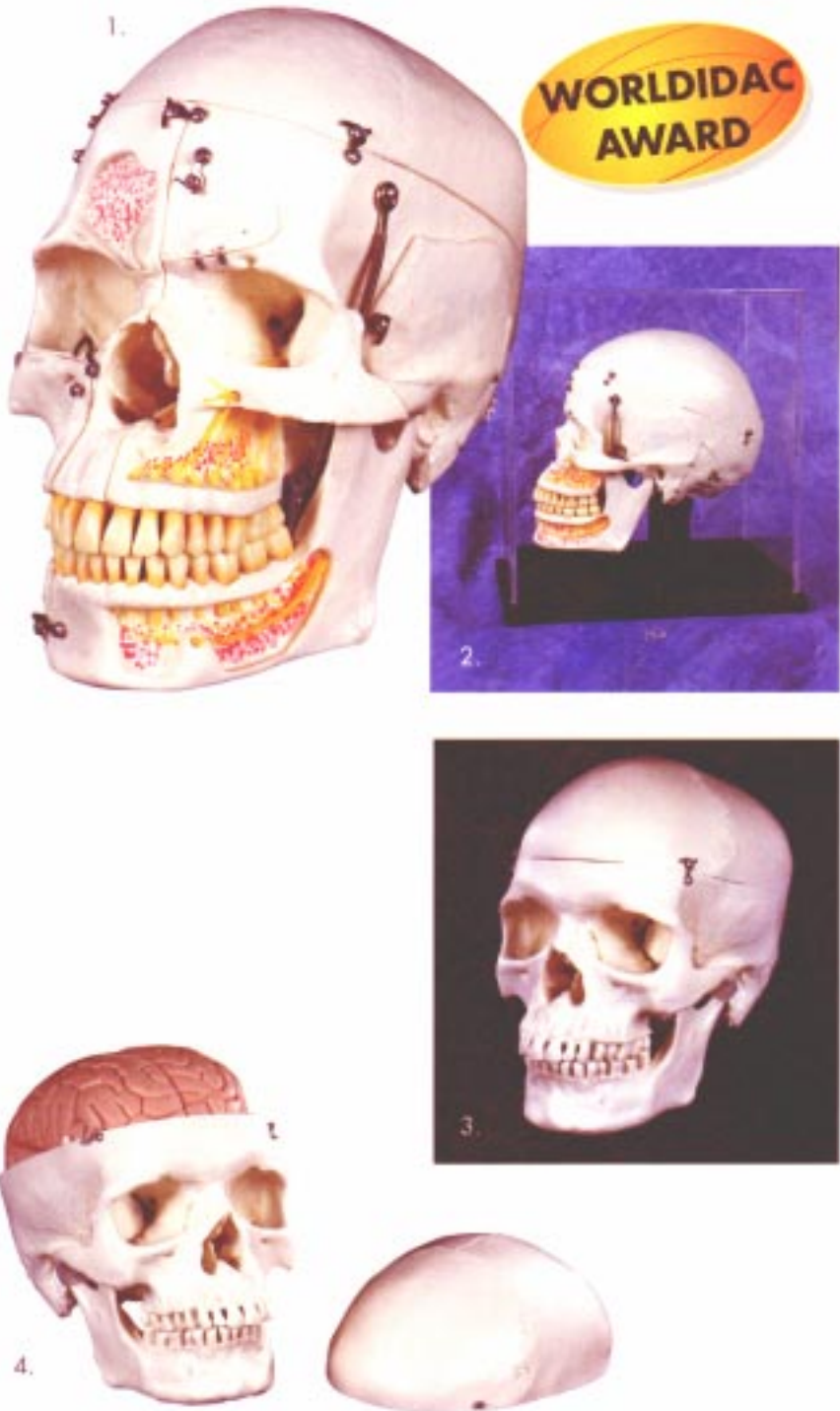
- Skull cap
- Skull base
- Lower jaw
- 4-part brain

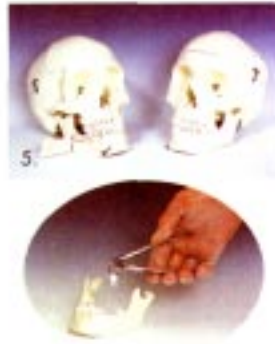
The brain is medically divided. Additionally, the right half can be disassembled into:

- Frontal with parietal lobes
- Brain stem with temporal and occipital lobes
- Half of the cerebellum

DIMENSIONS/WEIGHT 27x21 x22 Gm/ **1.7** KG  
**A28/9**

For pricing call  
Kappa Medical  
1-800-634-0880  
[kappamed@northlink.com](mailto:kappamed@northlink.com) e-mail





### 3. TMJ Skull, 2-part

Now you can easily demonstrate TMJ trauma. This skull is fitted with the temporal and masseter muscles, as well as the medial and lateral pterygoideus in order to demonstrate the relationship of the temporal mandibular structures to occlusion associated with TMJ syndrome. Comes with removable skull cap. DIMENSIONS/WEIGHT **23x 16.5x 17 CM/0.9 KG**  
**A24**

**1. Classic Skull, with opened lower jaw, 3-part** In this detailed dental model, the lower jaw is opened to show the tooth roots, blood vessels and nerves. Skull bones, bone components, fissures, foramina and other structures are numbered. Skull sutures are drawn in color. Superficial brain vessels and veins (sinus) are also shown in color. KEY CARD L/G/E/F DIMENSIONS/WEIGHT **23X 16.5x 17 CM/0.8 KG**

**A22**

### 4. Didactic Skull on cervical spinal column, 4-part

This superb new skull from 3B Scientific uses 19 didactic colors to simplify the understanding of the shapes and relationships of the different bone plates forming the skull. Mounted on a cervical spine (C1, C2 and C7 are colored) this model also depicts the hind-brain, spinal cord, cervical nerves, vertebral arteries, basilar artery and rear cerebral artery. Comes on a stand. DIMENSIONS/WEIGHT **36x23x20 cm/1.4 KG**  
**A20/2**

### 5. Skull with teeth for extraction, 4-part

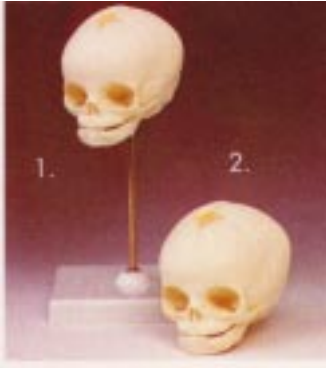
Teeth in the upper and lower jaw can be extracted and replaced individually. The teeth are true to size and feature fully-formed roots. Hinged flap on the lower right jaw can be opened to expose tooth roots, cancellous, nerve canal and an impacted wisdom tooth. DIMENSIONS/WEIGHT **22x 13.5x 17 CM/0.8 KG**  
**W1 0532**

### 2. Painted Classic Skull, with opened lower jaw, 3-part

Muscle attachments (blue), and origins (red) are shown. KEY CARD L/G/E/F DIMENSIONS/WEIGHT **23x 16.5x 17 CM/0.9 KG**  
**A22/1**

For pricing call  
Kappa Medical  
1-800-634-0880

[kappamed@northlink.com](mailto:kappamed@northlink.com) e-mail



**1. Fetal Skull, with stand**

These fetal skulls are cast from natural specimen in the 30th week of development. DIMENSIONS/WEIGHT 1 8.5x 1 4.5x 14 CM/0. 4 KG  
A26

**2. Fetal Skull**

also available without stand  
DIMENSIONS/WEIGHT  
14x9x9 cm/0.2 KG  
A25

**3. Microcephalic Skull**

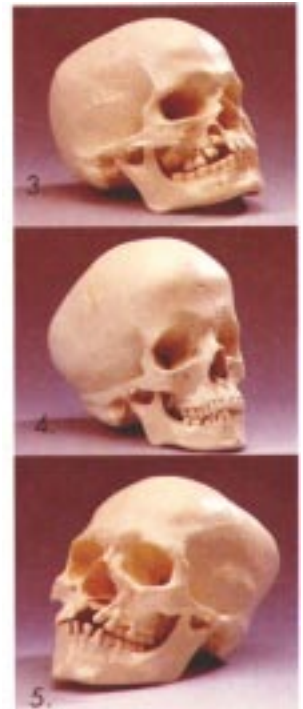
Young male. This 1 -part microcephalic skull has an alveolar abscess of the right maxilla with the canine tooth suspended in the abscess. The molars exhibit severe attrition. It has 27 teeth. Cast from natural human specimen. DIMENSIONS/WEIGHT 23x 1 6.5x 17 cm/0.6 KG  
A29/1

**4. Hydrocephalic Skull**

The enlarged cranium is typical for this sometimes fatal condition. The top of the I -part skull is partially covered with periosteal formation. The first premolar and molar on the right side of the mandible are diseased. Cast from natural human specimen. DIMENSIONS/WEIGHT 2 8x2 3x 19.5 CM/ 1 .0 KG  
A29/2

**5. Skull with Cleft Palate and Maxilla**

Male. Severe congenital facial defect on the left side of the skull. The 1 -part skull has 29 teeth. Cast from natural human specimen. DIMENSIONS/WEIGHT 2 8x2 3x 19.5 CM/0. 8 KG  
A29/3



**6. Sinanthropus Skull**

Homo erectus pekinensis (Pithocanthropus pekinensis). Representation of early man. Year of discovery: 1928. Location of discovery: a cave in Choukoutien in the vicinity of Peking. Age: 400,000 years. DIMENSIONS/WEIGHT 21.5x 1 5.5x 17 CM/0. 8 KG  
VP750

**8. Cro Magnon Skull**

Homo sapiens. Representative of ice-age human. Year of discovery: 1868. Location of discovery: a cave in Viser valley in Southern France. Age: 20,000-30,000 years. DIMENSIONS/WEIGHT 30x20.5x22 CM/1.0 KG  
VP752

**10. Broken Hill Skull** Homo erectus rhodesiensis. Representative of early man. Year of discovery: 192 1. Location of discovery: North-West Zimbabwe. Age: 40,000 years. DIMENSIONS/WEIGHT 30x20.5x22 CM/0.8 KG  
VP754

**7. La Chapelle aux Saints Skull**

Homo sapiens neanderthalensis (classic Neanderthal). Representative of early man. Year of discovery: 1908. Location of discovery: Southern France. Age: 35,000-40,000 years. DIMENSIONS/WEIGHT 30x20.5x22 CM/0.9 KG  
VP751

**9. Steinheim Skull**

Homo sapiens praesapiens. Reconstruction. Year of discovery: 1933. Location of discovery: Steinheim on the Murr, near Stuttgart. Age: 200,000 years. DIMENSIONS/WEIGHT 3 1 X] 5x1 7.5 cm/ 0.7 KG  
VP753

**11. Oldoway H5 Skull**

Australopithecus boisei (Zinjanthropus boisei). Discovery group: Australopithecus (ancient man). Year of discovery: 1959. Location of discovery: Oldoway Bay, East Africa. Age: 1,750,000 years. DIMENSIONS/WEIGHT 30x20.5x22 cm/1.2 KG  
VP755

For pricing call 1-800-634-0880  
Kappa Medical, Inc  
kappamed@northlink.com e-mail